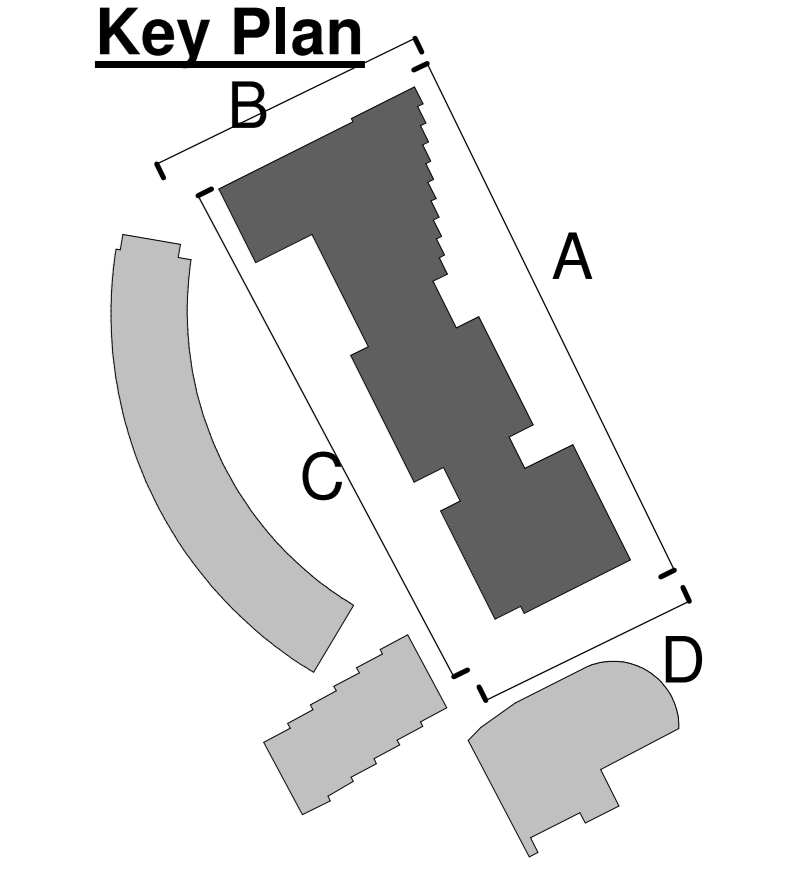


Notes  
Do not scale from this document, unless for the purposes of planning where a scale bar is provided. Refer to figured dimensions only. Be verified on site prior to construction. Report all discrepancies to the Document Originator immediately. This document is to be read with relevant documents, drawings and standards.



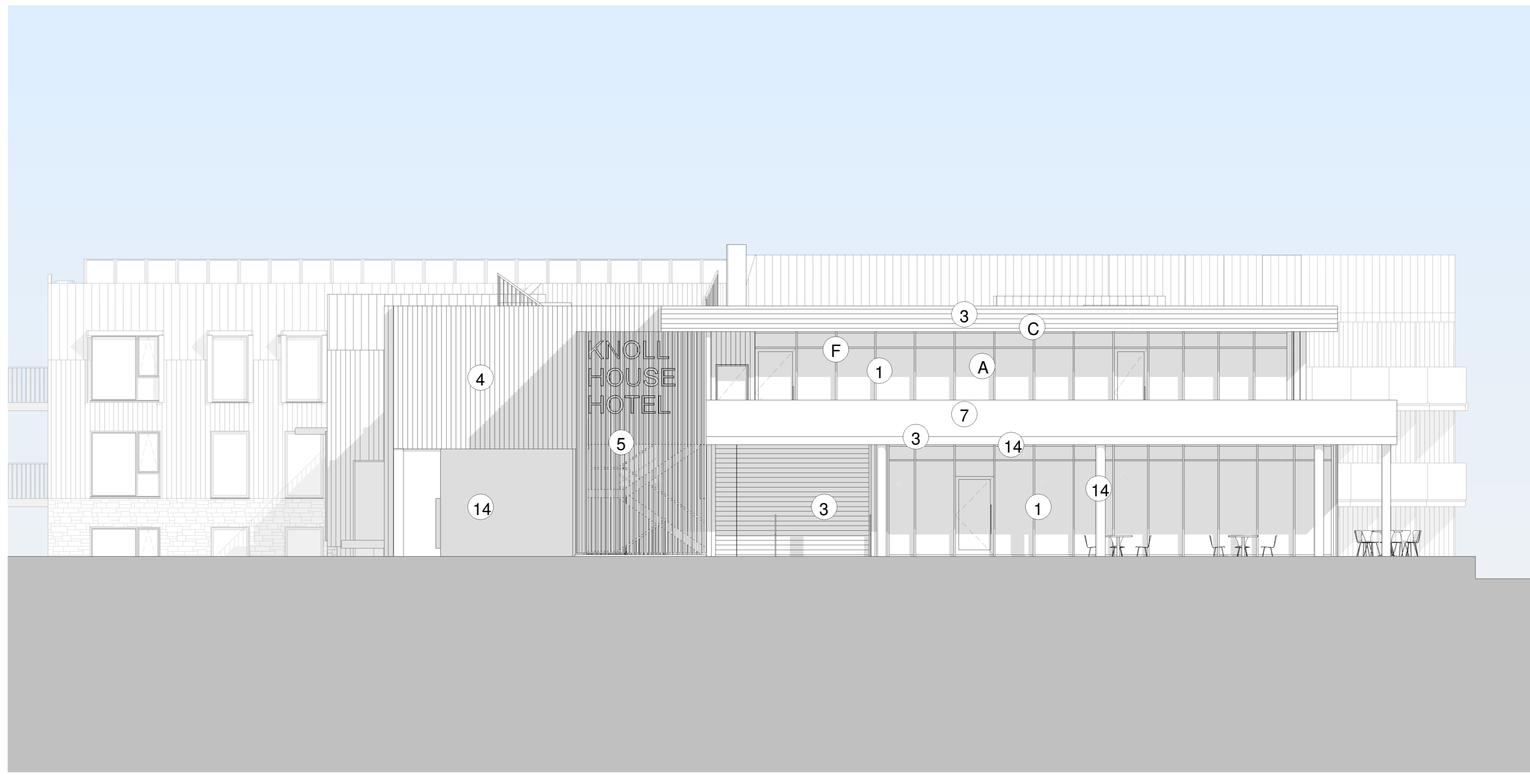
**Proposed East Elevation**  
1:100

External restaurant pod see drawing 20020  
Existing ironstone columns retained  
Existing facade retained, with existing wall cladding and linings upgraded, new fenestration and roof covering



**Proposed North Elevation**  
1:100

Basement Service Area



**Proposed South Elevation**  
1:100



**Proposed West Elevation**  
1:100

- Proposed Materials**
- 01 Curtain Wall Glazing - Dark Grey Slick System with Exposed Vertical Mullions
  - 02 Dark Grey Aluminium Brise Soleil
  - 03 Timber Cladding - Horizontal Shiplap
  - 04 Timber Cladding - Vertical Shiplap
  - 05 Vertical Open Slatted Timber
  - 06 Louvre Behind
  - 07 Clear Glazed Frameless Balustrade
  - 08 Purbeck Dressed Stone Wall
  - 09 Standing Seam Natural Grey Zinc Roof
  - 10 Dark Grey Aluminium Doors and Windows
  - 11 Dark Grey Aluminium Louvres
  - 12 Green Wall
  - 13 PV Panels
  - 14 Dark Grey Perforated Aluminium Roller Shutter
  - 15 Timber Soffit
  - 16 Mansafe System
  - 17 Extensive Green Roof
  - 18 Entrance Canopy - Pressed Dark Grey Aluminium
  - 19 External Steel Staircase - Dark Grey Finish
  - 20 Dark Grey Render
  - 21 PPC Grey Toned Aluminium Vertical Railing Balustrade
  - 22 Stone Paving to Balconies
  - 23 Stainless Steel Restaurant Flue
  - 24 Timber Column
  - 25 Sliding Slatted Timber Screen
- Internal Light Spill Mitigation Measures**
- A All external glazing to be specified with an appropriate visible light transmittance (VLT) of 0.40 or less
  - B Large areas of glazing to be broken up with solid panels
  - C Extended roof eaves to enclose balconies
  - D External slatted screens to disperse light
  - E Stepped/staggered building form
  - F Internal blackout blinds

Rev	Date	Notes	HR	MAG	DR	CHK

1 0 1 2 3 4 5  
m  
SCALE 100

Document Originator  
**AWW**  
London 106 Weston Street, SE1 3QB 020 7160 6000  
Plymouth East Quay House, PL4 0HX 01752 261 282  
Bristol pivot + mark, 49-52 Baldwin Street, BS1 6BB 01274 688 5555

Chartered Practice  
Kingfisher Resorts Studland Ltd

AWW Project Number/Project Stage  
4561 STAGE 2

Project Title  
Knoll House Hotel Studland

Title  
Hotel - Elevations Proposed

Scale @ A Document Status  
As PLANNING

Indicated Volume Level Type Roll Number Rev  
4561AWW13 X DR A 130001 F07